

ECO TERRA

ECO TERRA by ECOXGEAR

Shock Resistant + Waterproof + Floats + Boombbox (Model: GDI-AQS160)

Specifications

Construction:	Waterproof IPX7 Shock Resistant Polycarbonate Outer Shell & Rubber Bumpers		
IPX7 Waterproof Rating:	Water submersion not to exceed 3' (1m) depth for 30 minutes		
Buoyancy:	Floating payload (MP3 player, keys, etc) maximum 4.4lbs (2.0kg)		
External Audio Jack:	3.5mm Waterproof IPX7 Jack	Internal Audio Plug:	3.5mm plug & fixed cable
Dimensions (LxWxH):	5"x15" x8" (130x380x200mm)	Weight:	4.4 lb
Frequency Range:	160Hz - 20,000Hz	Output Power:	3 Watt per Speakers
DC Power Input (Battery) Source:	4 x-1.5V size C alkaline batteries	Battery Life:	20 hours
AC Power Input (Adapter) Source:	IP - AC100V ~ 240V, 0.24A / OP - DC5.0V, 1A, 72" (1.8m) cord		
Temperature Storage:	14°F to 131°F (-10°C to 55°C) / Operating: 23°F to 131°F (-5°C to 55°C)		

FCC Compliance Statement & Warning: This device has been tested & found to comply with the limits for a Class B digital device, pursuant to Part 15 of the FCC Rules. These limits are designed to provide reasonable protection against harmful interference in a residential installation. The device generates, uses & can radiate radio frequency energy & if not installed & used in accordance with instructions may cause harmful interference to radio communications. There is no guarantee that interference will not occur in a particular installation. If this device causes interference to radio or television reception, try one of these measures: reorient or relocate the receiving antenna, increase separation between device & receiver, connect the device into an outlet on a circuit different from that to which the receiver is connected, consult a dealer or experienced radio / TV technician for assistance. Changes or modifications not expressly approved by the party responsible for compliance could void the user's authority to operate the device and/or void the manufacturer's limited warranty.


Introduction

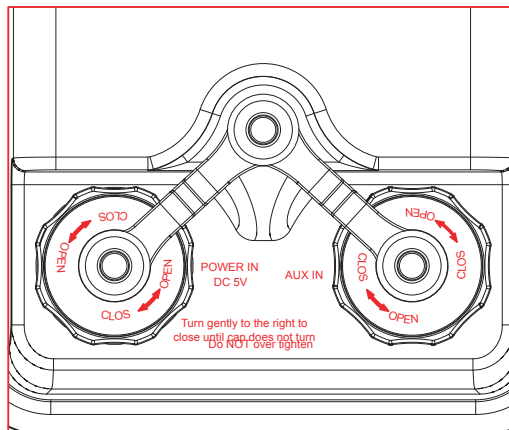
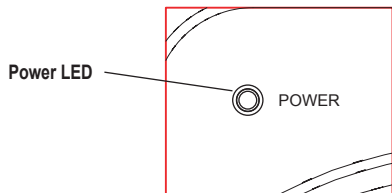
The ECO TERRA is designed for indoor and outdoor use with leading Smartphones & audio devices including MP3 players, iPod, iPhone, Android™ & BlackBerry®. The unit is powered using batteries or the power adapter. Once connected to the audio connection, power & audio volume can be controlled from external buttons for all devices. PLAY /PAUSE [>||], BACK Selection [<<], FORWARD Selection [>>] are designed for iPhone. As all devices have different audio jack control designs, Smartphones and MP3 devices other than Apple will play audio but may not support the control of the music selection options using the external buttons.

Getting Started

The ECO TERRA is powered using the AC power adapter (included) or 4 x 1.5V size C alkaline batteries (sold separately).

Connect Power Adapter

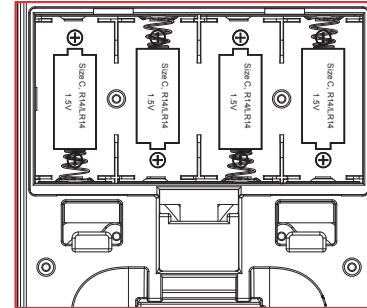
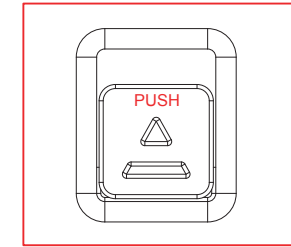
1. To power your ECO TERRA using power from a wall outlet, simply open the cap covering the AC Power Adapter on the back of the unit by gently turning the cap to the left.
2. Once open, plug the adapter into the connection and connect the prongs to the power outlet.
3. Connect the 3.5mm jack on the audio cable from the cabinet to the device and press the power button  on the ECO TERRA.
4. When powered on, the LED above the right speaker will light green.



NOTE: IF batteries and the power adapter are used at the same time, the ECO TERRA will default to the AC power adapter to power the unit. The DC-IN power jack on the back panel is for connecting the unit to the AC / DC adapter included with the ECO TERRA. The internal battery is automatically disconnected when the output plug of the AC power adapter is plugged into this power input jack.

Installing Batteries

1. The battery compartment is located behind the front cabinet. To access this area, open the clear front door on the cabinet.
2. The compartment door is covered by the protective felt insert. To remove the insert, push upward on the latch button.
3. Pull gently downward on the insert and remove. Once the insert is removed the battery compartment door is exposed.
4. Open the door by gently pushing upward on the battery door latch. Once open, space for 4 individual C batteries is exposed.



5. Insert the batteries and ensure the negative end [-] of the batteries are touching against the sides with the springs.

IMPORTANT Use new, fully charged & commonly branded batteries. Improper batteries may result in speaker audio distortion or "hum" or reduced play time.

6. Replace the battery door and protective felt insert.

IMPORTANT When the battery is low, the green LED will flash continually for a period of time and power down (turn off) automatically when the battery is too low. When this occurs, replace the old old batteries with new, same branded batteries. Remove the old batteries from the battery compartment. To ensure complete electrical discharge from the unit, allow the TERRA to sit for approximately 60 seconds before installing new batteries. ALWAYS use NEW 1.5V size C alkaline batteries of the same brand for best audio performance and playtime.

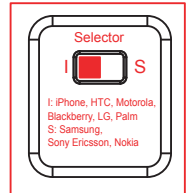
Listening to Music: Audio Controls & Features

Selector Switch (Smartphone Type Selector)

The SELECTOR switch should be set before plugging the audio cable into the headset jack of the audio source (MP3 player, iPod, iPhone or Smartphone). The major classes of Smartphones have an audio interface circuit that is in one of two categories: "iPhone or I type" & "Samsung or S type".

"I" includes iPhone & iPod, HTC, Motorola, BlackBerry, LG, Palm. "S" includes Samsung, Sony Ericsson, Nokia. For this reason ECO TERRA has a slide SELECTOR switch inside the cabinet to accommodate the different devices. A cut-out on the protective felt tray allows direct access to the SELECTOR.

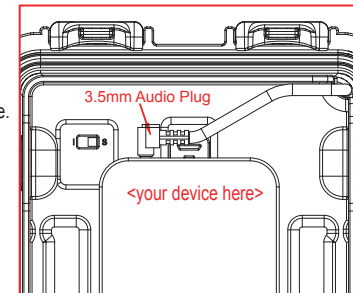
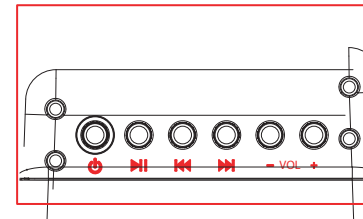
BEFORE continuing, use the SELECTOR to set I or S, respectively.



IMPORTANT Certain models may not operate as expected. Should the device connected to the TERRA not play as expected, switch between S & I and visa-versa.

Audio Cable & 3.5mm Plug

1. The ECO TERRA unit uses a 4-way audio plug to connect to leading Smartphones & audio devices. For best performance power your device & set the audio volume level between 75-85 % of the maximum on the device.
2. Insert the 3.5mm audio cable from the ECO TERRA into the audio connection on the device. Place the device in the protective tray inside the front cabinet. **NOTE:** You may play from the device with the front door of the cabinet open or closed



3. Press the Power button on the ECO TERRA. Use the Buttons on the top of the unit to control VOLUME [- VOL + VOL], PLAY /PAUSE [>||], BACK Selection [<<], FORWARD Selection [>>]

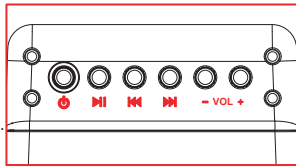
IMPORTANT: - VOL+ button shall control the volume level for all devices. Not all devices will support all other music selection button options. In such an instance, use only [- VOL + VOL] & control the features directly on the device connected to the TERRA to control PLAY/PAUSE, etc.

NOTE: Audio Cable 3.5mm Plug left & right channel inputs are connected in parallel with the channels for the AUX-in jack on the back of the unit. Thus, if connected and played at the same time, audio from a device connected to the internal 3.5mm Audio Plug will be heard at the same time as audio from an external audio device connected to AUX-IN (located on the back panel of the ECO TERRA & protected by a screw on cap)

Control Buttons & Audio

Connect your device to the audio plug and use the Control Buttons on the top of the ECO TERRA to control VOLUME [- VOL +], PLAY /PAUSE [>|], BACK Selection [|<<], FORWARD Selection [>>|]

The button selections refer to an iPhone device connected to the unit via the 3.5mm 4-way audio plug. Other mobile phones and MP3 may not be applicable.



1. POWER ON/OFF

Pressing the Power On/Off Button alternately switches on and off the whole unit. The green LED at the front indicates the power status as ON (green light) or OFF (no light). When the battery is low, the LED will flash continually until the unit the battery powers off and shuts down the unit. The headset jack can be used with or without power..

2. SMARTPHONES & Incoming Calls.

Pressing the PLAY/PAUSE button alternately plays and pauses playing music selected on the iPhone. This button also serves as an Answer Call button for incoming calls and the Hang Up button to end a phone connection.

NOTE: When the unit is powered ON & connected to a Smartphone, incoming calls can be received & the caller's voice will play over the speakers.. The caller will NOT hear the receiver's voice while the phone is connected to the audio plug. When the unit is powered OFF, the incoming caller's voice will NOT play over the speakers, and the caller should hear the receiver's voice and continue a call through the mic of the smartphone headset while the phone is connected the audio plug, AND the smartphone headset is connected to the waterproof earphone jack.

3. BACK SELECTION

Pressing the BACK SELECTION button while the play pointer is near the beginning of the current song causes the pointer to move to the beginning of the previous song. If the beginning portion of the current song is already past, pressing this button results in resetting the pointer to the beginning of the current song.

4. FORWARD SELECTION

Pressing this button moves the play pointer to the beginning of the next song.

5. VOLUME DOWN

Pressing this button decreases the gain (i.e. the amplifying factor) of the audio power amplifier inside the ECO TERRA and reduces the output volume. **NOTE:** The actual output level of the iPhone is not affected.

6. VOLUME UP Pressing this button increases the gain (i.e. the amplifying factor) of the audio power amplifier inside the ECO TERRA and increases the output volume. When the volume increase button is pressed and reaches the maximum volume level, the green LED will flash 3 times quickly

NOTE: The actual output level of the iPhone is not directly affected by the VOL button.

IMPORTANT For best audio performance and play time it is recommended that the source output volume be adjusted to 75%-85% of the maximum. Excessive output may lead to excessive distortion in the output signal from the device.

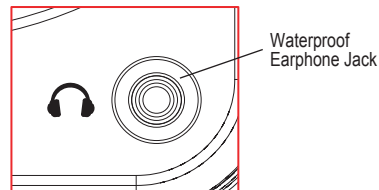
AUX-in Jack

An external audio source can also be played over the speakers on the ECO TERRA by connecting to the 3.5mm AUX-in jack on the back panel. The input is stereo and the input is over a 3-way audio connecting cord with 3-way audio plugs at both ends of the cord.

Waterproof Earphone Jack

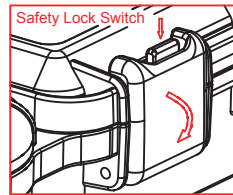
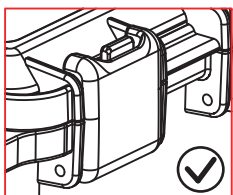
The ECO TERRA is equipped with a 3.5mm 4-way IPX7 waterproof earphone jack. The headset jack is waterproof when connected & when not connected to a headset. The jack is designed to connect earphones with or without a microphone. In most cases, when the Smartphone or audio device is connected to the 3.5mm audio cable plug inside the cabinet and the earphones connected to the jack are the same set as originally issued with the Smartphone, the earphones may be used to perform remote control functions.

NOTE: Audio to the earphones is not driven by the audio power amplifier of the ECO TERRA. Instead the jack is designed so that the earphones connected to the jack are driven directly by the audio device connected to the internal audio cable plug or the device connected to the Earphones & earphones/microphone features are not universally supported as interoperability will vary by model.



Clasps & Safety Lock Button

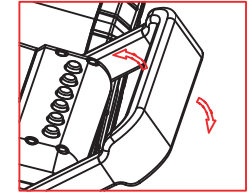
Clasps are designed to snap closed and lock. To open, press in the Safety Lock Button and pull up gently on the clasps. Close both safety latches properly before use. IF not properly closed the ECO TERRA watertight seals may be jeopardized.



Ready for use in a Wet Environment

IMPORTANT To ensure the ECO TERRA is prepared for use in a wet environment:

- Close the clear front door on the front panel & fasten the 2 clasps at the top. Push down to "snap shut".
- Be sure there is no interference along the door and the rubber seal cabinet.
- Close the cap for the AUX-in connection on the back panel by gently turning to the right until the cap is firmly closed and does not turn. Do NOT over tighten the cap.
- Close the cap for the AC Power Adapter connection on the back panel by gently turning to the right until the cap is firmly closed and does not turn. Do NOT over tighten the cap.
- Speakers & Headphone Jack connections are watertight

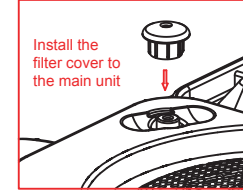
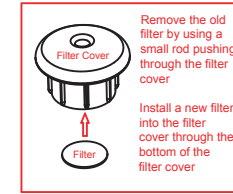
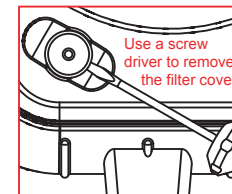


Handle, Carabiners & Shoulder Strap

The ECO TERRA may be carried using the adjustable handle, the shoulder strap attached to the carabiners or the carabiners can be used to fasten or hang the unit

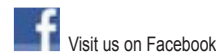
Care, Maintenance & Precautions

1. Although the ECO TERRA is waterproof, the unit is NOT designed for use under water. Do NOT intentionally submerge the unit underwater.
2. Close safety latches & caps properly before use. If the unit is placed in water without the latches & caps properly closed, water may enter into the battery compartment and void your warranty.
3. Dry the unit completely before opening. Do NOT open the unit when wet or in a wet environment.
4. To open the safety latch, press and hold the safety lock switch, and then pull the latch out.
5. Do NOT apply excessive force to any surfaces of the unit, especially when wet or in a wet environment.
6. Do NOT use or store the unit in places with high temperature (e.g.: directly exposed to sunlight for a long period, store in a closed car, etc.), significant altitude / temperature changes or strong magnetic fields.
7. Always check the rubber sealing ring to make sure it is placed properly. Please ensure there are no objects such as dirt, hair, sand, audio wire or particles in or around the seals.
8. Always clean the rubber sealing ring, the exterior and the interior of the unit with a soft moist cloth before use. Do NOT use any oily solvent or chemicals for cleaning as this may cause the rubber sealing ring to degrade causing the Eco Extreme to lose its waterproof properties.
9. If used in or around salt water please rinse off with tap water on a clean a soft moist cloth after each use.
10. Do NOT mix new and old batteries, nor rechargeable and non-rechargeable batteries.
11. Alkaline batteries are recommended for best operation. ALWAYS use NEW batteries of the same brand.
12. Always remove the batteries if the unit is not in use for a long period of time.
13. Noise and audio distortion may occur when the batteries are old. Replace the batteries with new alkaline batteries or fully charged rechargeable batteries.
14. A dirt/ dust filter is below the filter cover. This dirt filter is used to protect the internal air equalization filter (there is no access to the internal air filter). The internal air filter equalizes the air pressure inside and outside the box. This internal air filter protects the speaker from damage in the event of high pressurized use such as airplanes or mountain climbing. The dirt filter only needs to be replaced if there are large amounts of dirt or grime covering the 'filter cover'. Please see below for the dirt filter replacement procedure:



Limited Manufacturer's Warranty

The ECO TERRA is supported by a 1 year limited manufacturer's warranty covering defects in workmanship and / or materials for a period of 1 year from date of original purchase. This warranty does not apply to any products which have been abused, neglected, modified or used for a purpose other than the one for which they were manufactured. Please refer to the above care and maintenance instructions for care details. The warranty is valid only for the original owner who purchases the unit from an authorized dealer. Transfers do not qualify for warranty protection. The manufacturer, Grace Digital Inc., reserves the right to replace any out-of-stock or discontinued product with a comparable product. Discontinued products may not be available for warranty replacement. Contents are NOT covered by the limited manufacturer's warranty. Warranty terms may be revised without notification at the discretion of the manufacturer. Please visit www.ecoxgear.com for additional product & warranty information



ECO TERRA by ECOGEAR a division of Grace Digital Inc. Designed in California. Assembled in China. All rights reserved. The Trademark BlackBerry® is owned by Research In Motion Limited and is registered in the United States and may be pending or registered in other countries. Grace Digital Inc. is not endorsed, sponsored, affiliated with or otherwise authorized by Research In Motion Limited. iPod/ iTunes / iPhone / iPod Touch are a trademark Apple Inc. registered in the U.S. and other countries. Android and Android Market™ are trademarks of Google, Inc. Use of this trademark is subject to Google permission.